

*Baylor University
and the
Texas Digital Library*

**Pattie Orr,
Vice President for Information Technology
& Dean of University Libraries**



BAYLOR
UNIVERSITY

Baylor's History with TDL

- ❖ Joined December 2006 to:
 - ❖ Support the concept
 - ❖ Implement new/evolving technologies
 - ❖ Showcase Baylor's intellectual productivity in conjunction with other Texas universities
- ❖ Participated in Repositories Working Group
- ❖ Implemented Shibboleth



Baylor and TDL

Where we are now

- ❖ Serve on TDL Board of Directors
- ❖ Provide facilities and coordination of training for TDL members
- ❖ Participate in the instruction which improves our skill sets with the technology and tools
- ❖ Currently chairs and participates in Metadata Working Group
- ❖ Presents regularly at the Texas Conference on Digital Libraries

Supporting Evolving Technologies

- ❖ Shibboleth
 - ❖ Raised priority for Baylor's implementation
 - ❖ Now apply it to other services
- ❖ Open Source Applications
 - ❖ Technical support
 - ❖ Infrastructure
 - ❖ Customizability

Support of Faculty Researchers

- ❖ Faculty's needs
 - ❖ Scholarly blogs
 - ❖ Peer-reviewed e-journals
 - ❖ Online conference management system
- ❖ Researcher's needs
 - ❖ Grants
 - ❖ Community of scholars
 - ❖ Quality URL naming
 - ❖ URL permanence



Repository for ETDs with Vireo Application

- ❖ Plan to move to this submission process for Baylor's Electronic Theses and Dissertation (ETD)
- ❖ Why Baylor wants to use Vireo
 - ❖ Common interface for the submission of ETD to the TDL repository
 - ❖ Simpler for student submissions
 - ❖ Better management of the submission workflow for staff



Training Opportunities

- ❖ Dspace and Vireo
- ❖ Wikis in a scholarly environment
- ❖ Blogs with TDL
- ❖ Online scholarly journals



User Group Opportunities

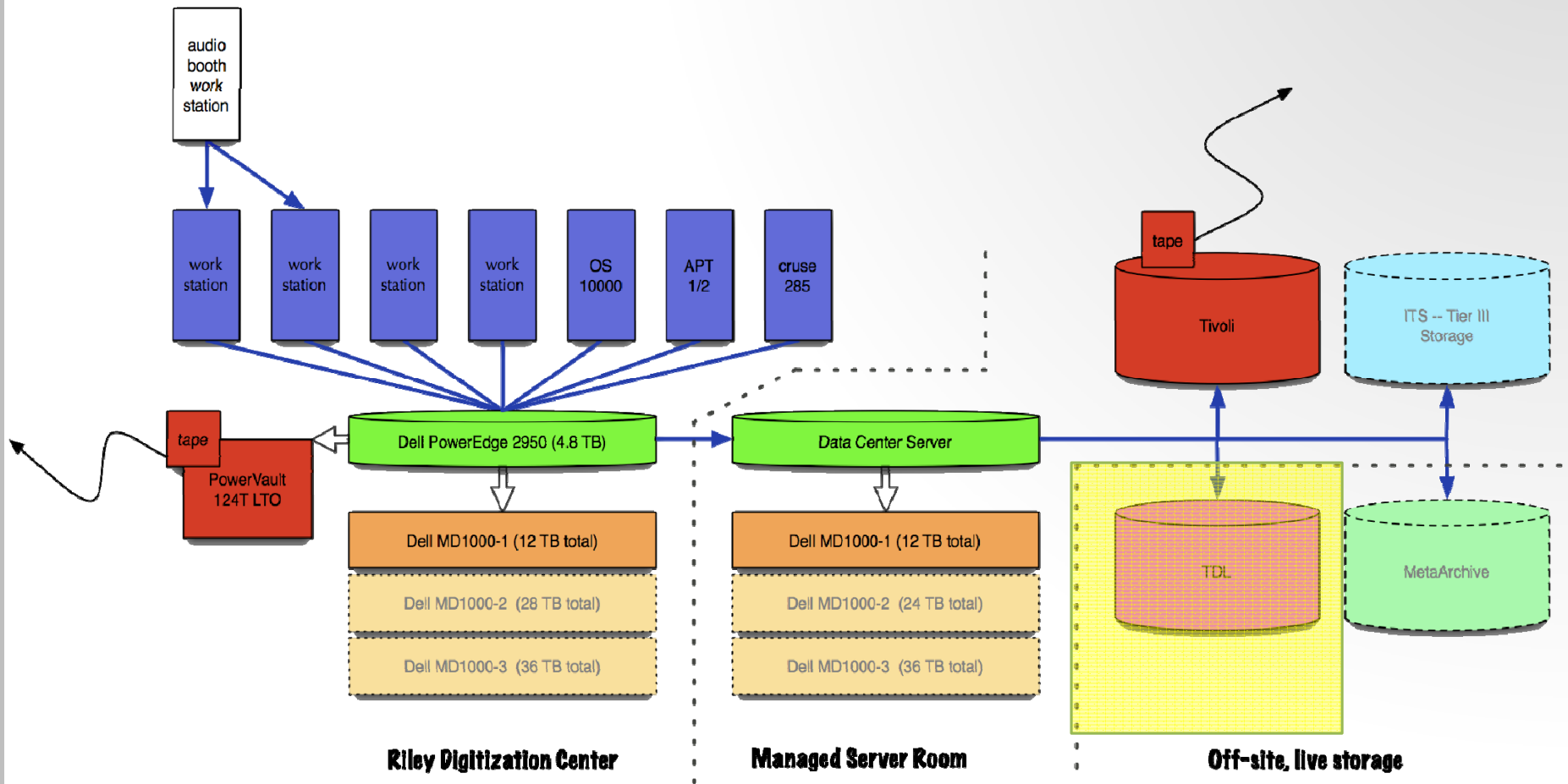
- ❖ Collaborate and network with other Texas academics
- ❖ Share information about projects
- ❖ Discuss best practices and standards

TDL Data Hosting Services

- ❖ Provides an off-site dark archive
- ❖ Allows easy access to server
- ❖ Includes Linux tools for file management
- ❖ Synchronizes data to archive semi-weekly



Our data configuration at TDL



Why TDL is important Baylor (and me)

- ❖ Scholarly services
- ❖ Provides professional staff development
- ❖ Preserves our data in the TDL cloud
- ❖ Building for future
- ❖ Catalyst for innovation and experimentation