

The Government Documents Digitization Initiative: Shepherding Resources from Shelf to Server

Ryan Laddusaw
Sean Buckner
Laura Sare



TEXAS A&M
UNIVERSITY.

Flood Insurance Study

A Flood Insurance Survey (FIS) is a compilation and presentation of flood risk data for specific watercourses, lakes, and coastal flood hazard areas within a community.



BRAZOS COUNTY, TEXAS AND INCORPORATED AREAS

Community Name	Community Number
Brazos County	481195
Unincorporated Areas	
Bryan, City of	480082
College Station, City of	480083
*Killeen, Town of	480569
Waco Valley, City of	481636

*Non-Floodprone Communities



REVISED May 16, 2012

Federal Emergency Management Agency

Flood Insurance Study Number
48041CV000A

<https://www.fema.gov/flood-insurance-study>



HathiTrust U.S. Federal Government Documents Program

Mission:

Through coordinated and collective action, expand and enhance digital access to U.S. federal publications including those issued by GPO and other federal agencies.

Goals:

Comprehensive digital collection: Build a comprehensive HathiTrust digital collection of federal documents distributed in print format by the Government Publishing Office as part of the Federal Depository Library Program.

Enduring access: Ensure that the benefits of HathiTrust work in areas such as improved quality, shared print collection management, collection development, enhanced resource discovery, and broader access to scholarly materials are realized in the HathiTrust federal documents collection and services.

<https://www.hathitrust.org/usgovdocs>



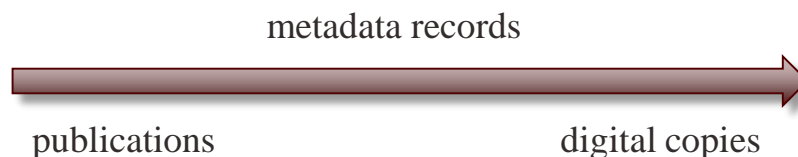
From Shelf to Server

Departments

- Evans Subject Librarians – Government Information
- Metadata & Cataloging – serials cataloging/metadata
- Collection Development & Acquisitions – GovDocs
- Preservation – Digitization and Digital Preservation
- Digital Initiatives – scripts, EZID and HathiTrust

Migration of Content

- Interdepartmental processes involved
- Multiple metadata transformations
- Digitized items renamed multiple times
- Files move across 4+ servers/spaces, various copies and formats generated
- Physical items: only TX records retained



Workflow Development

- Pull documents from shelves – who, how many, when?
- Check records – OCLC, upgrade/create records, add ARK/URL, update ILS TX vs. non-TX, generate metadata records XML/spreadsheet
- Digitize – disbind, scan, process TIFFs, file renaming, data transfer/file management; digital preservation?
- Gov Docs – rebind or recycle, records management
- **Scripts** – generate ARKs, build SIPs: derivative files-attach metadata, upload metadata to EZID-publish ARKs

https://upload.wikimedia.org/wikipedia/commons/3/33/Firestone_Library_Princeton_shelves.jpg

<https://babel.hathitrust.org/cgi/pt?id=txa.ark:/81423/m37p49>



Archival Resource Keys

- An ARK is a URL that is a persistent identifier
- Randomly generated alphanumeric string (e.g. **ark:/81423/m3a1b2**) appended to a handle
- TAMU Libraries uses EZID service to create and maintain ARKs
- Required by HathiTrust for content submissions
- Must use **Pairtree** file system convention for SIPs
ark:/81423/m3a1b2 → ark+=81423=m3a1b2
- Preservation requested a prefix be added for archival/
storage copies: **gddi_0001_ark+=81423=m3a1b2**



Workflow

Generate JPEG2000s

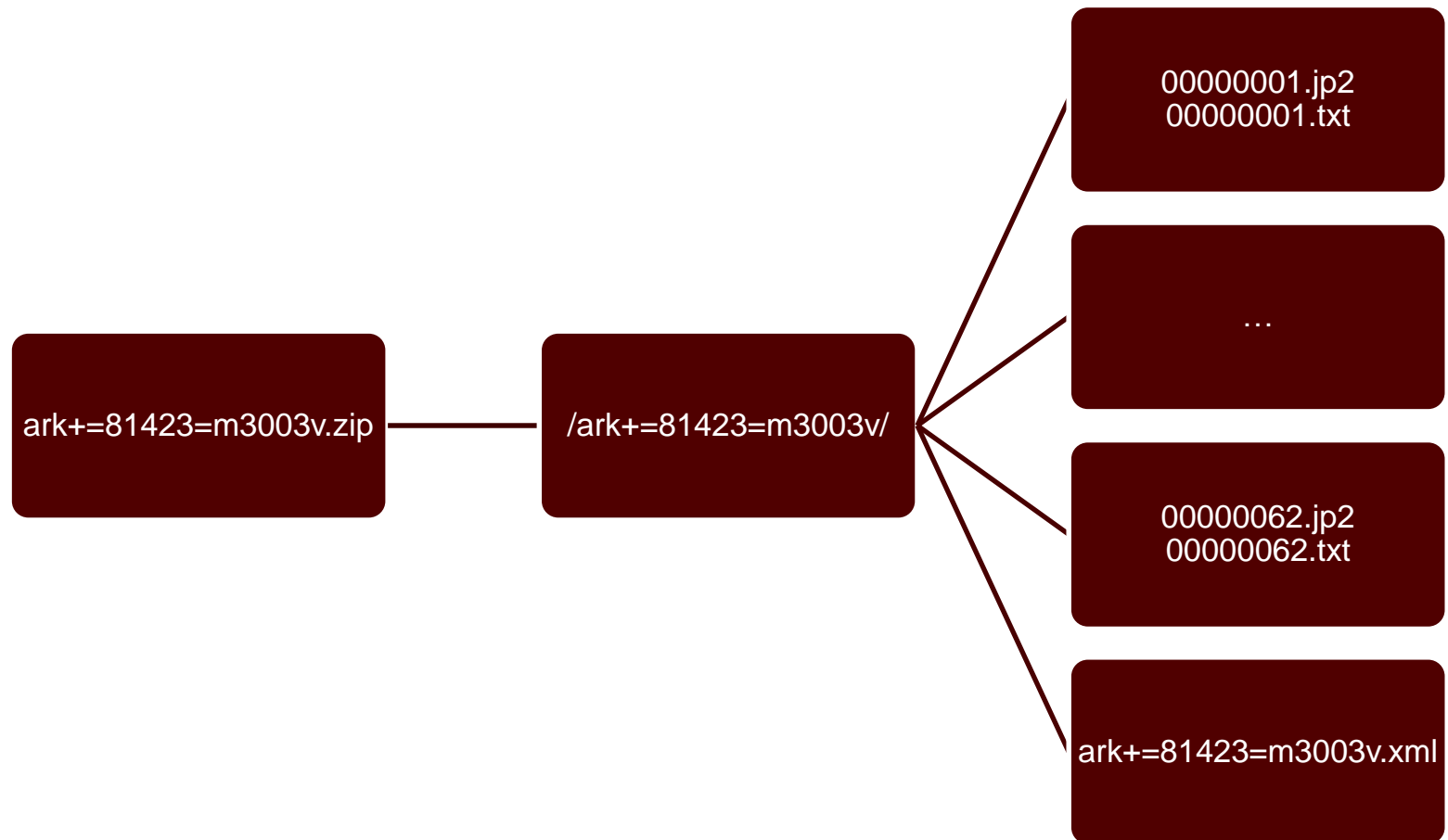
OCR (Tesseract)

Create XML Metadata

Package files for ingest



Submit to HathiTrust

Structure




METS XML Metadata

MARC Record




```
<marc:datafield tag="245" ind1="0" ind2="0">
  <marc:subfield code="a">Flood insurance study :</marc:subfield>
  <marc:subfield code="b">city of Midwest City, Oklahoma, Oklahoma County.</marc:subfield>
</marc:datafield>
```

PREMIS Metadata




```
<PREMIS:eventIdentifier>
  <PREMIS:eventIdentifierType>UUID</PREMIS:eventIdentifierType>
  <PREMIS:eventIdentifierValue>1944ee31-76f9-359f-baa6-b30df6599cfe</PREMIS:eventIdentifierValue>
</PREMIS:eventIdentifier>
```

Checksum Data



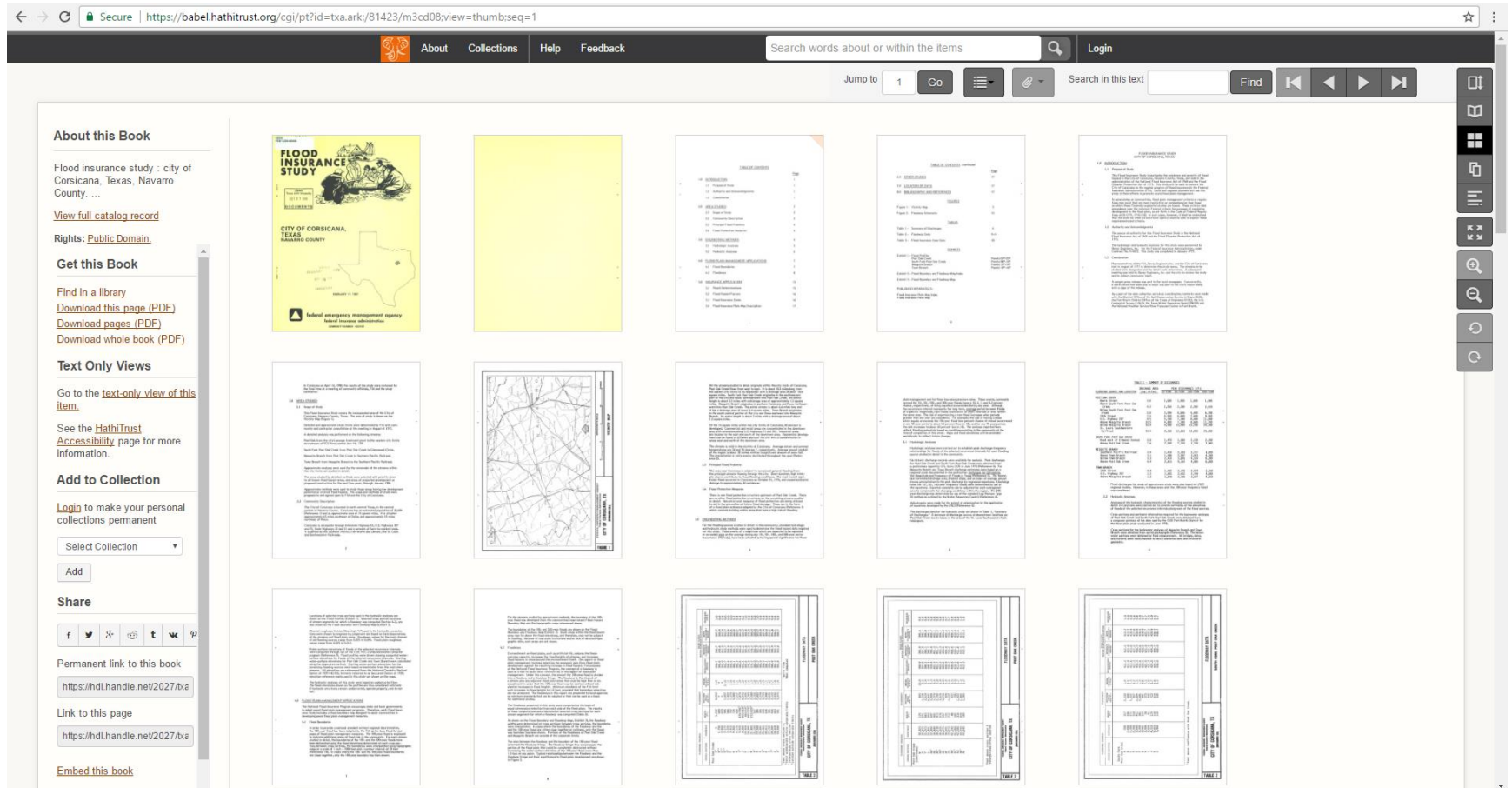
```
<METS:file SIZE="471" ID="OCR00000001" MIMETYPE="text/plain" CREATED="2017-04-27T22:17:41Z"
  CHECKSUM="272856ffe370b4c3431b0e183b13b4d0" SEQ="00000001" CHECKSUMTYPE="MD5">
  <METS:Flocat LOCTYPE="OTHER" OTHERLOCTYPE="SYSTEM" xlink:href="00000001.txt"/>
</METS:file>
```

Structural Map



```
<METS:div ORDER="5" TYPE="page">
  <METS:fptr FILEID="OCR00000005"/>
  <METS:fptr FILEID="IMG00000005"/>
</METS:div>
```


Thumbnail View



Page-Turner View

Secure | <https://babel.hathitrust.org/cgi/pt?id=txa.ark:/81423/m3mw21;view=2up;seq=6> ☆

About Collections Help Feedback Search words about or within the items Login

Jump to 6 Go Search in this text Find

About this Book

Flood insurance study. United States.

[View full catalog record](#)

Rights: [Public Domain](#)

Get this Book

[Find in a library](#)

[Download left page \(PDF\)](#)

[Download right page \(PDF\)](#)

[Download pages \(PDF\)](#)

[Download whole book \(PDF\)](#)

Text Only Views

Go to the [text-only view of this item](#).

See the [HathiTrust Accessibility](#) page for more information.

Add to Collection

Login to make your personal collections permanent

Select Collection ▼

Add

Share

Permanent link to this book

<https://hdl.handle.net/2027/txa>

Link to this page

<https://hdl.handle.net/2027/txa>

May 10 through May 13, 1976. Appropriate city and county officials were invited to attend. The meetings were conducted by representatives of the FIA with participation by representatives of the U. S. Army Corps of Engineers (COE). The purpose of the meetings was to determine the streams to be studied in detail and to discuss the National Flood Insurance Program. On June 12, 1979, the results of the study were reviewed at the final COO meeting attended by representatives of the FIA and the COE, and by community officials.

2.0 AREA STUDIED

2.1 Scope of Study

This Flood Insurance Study covers the incorporated area of the City of Hunters Creek Village, Harris County, Texas. The area studied is shown on the Vicinity Map (Figure 1).

The City of Hunters Creek Village is subject to stream flooding. Buffalo Bayou, Briar Branch, and Tributary No. 1 to Buffalo Bayou at stream mile 31.6 were studied by detailed methods. The areas studied by detailed methods were selected with priority given to all known flood hazard areas, and areas of projected development or proposed construction for the next five years, through November 1983. Detailed studies of Briar Branch and the Tributary No. 1 to Buffalo Bayou established that floods up to and including the 500-year flood remained within the channel banks along the reaches of the streams within the study area. Therefore, no flood boundaries were mapped for these areas. However, backwater from Buffalo Bayou does extend up Tributary No. 1 to Buffalo Bayou.

2.2 Community Description

The City of Hunters Creek Village is located in southwestern Harris County, approximately 10 miles west of downtown Houston. The population of Hunters Creek Village was 2,476 in 1960, 3,959 in 1970, and was estimated to be 4,395 in 1975. Basically, the community is a residential city within a large metropolitan complex. The city, having an area of about 1.7 square miles, is completely surrounded by the City of Houston and three other small residential cities. The community is included in the Houston Standard Metropolitan Statistical Area (SMSA), which had an estimated 1975 population of 2,316,832. This SMSA is a center for petrochemical and other chemical plants, shipbuilding, agribusiness, port activities, and varied manufacturing (Reference 1).

Digitized by TEXAS A&M UNIVERSITY

Original from TEXAS A&M UNIVERSITY

APPROXIMATE SCALE
0 1000 2000 FEET

VICINITY MAP

CITY OF HUNTERS CREEK VILLAGE, TX
(HARRIS CO.)

FIGURE 1

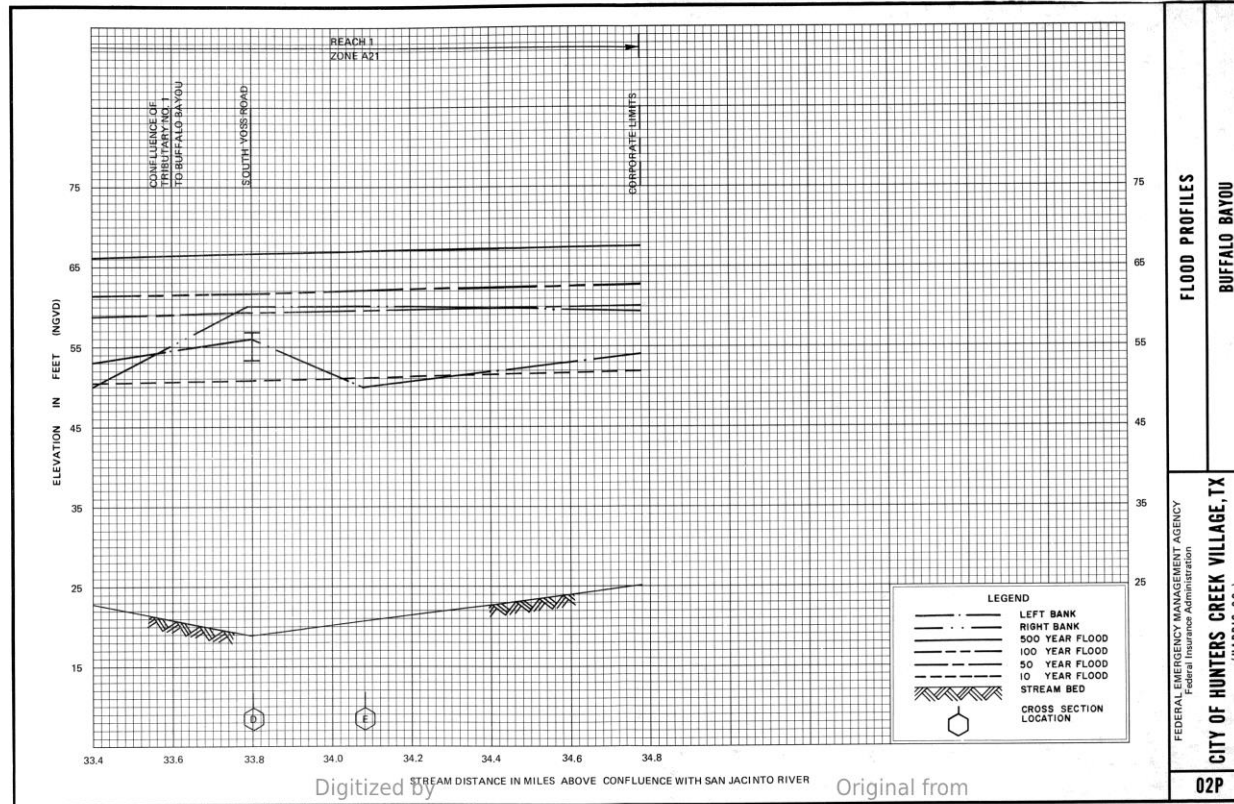
Digitized by TEXAS A&M UNIVERSITY

Original from TEXAS A&M UNIVERSITY

<https://babel.hathitrust.org/cgi/pt?id=txa.ark:/81423/m3mw21;view=2up;seq=6>



Chart



Digitized by
TEXAS A&M UNIVERSITY

Original from
TEXAS A&M UNIVERSITY

Chart – Detail





Questions

Ryan Laddusaw – rladdusaw@tamu.edu

Sean Buckner – sbuckner@tamu.edu

Laura Sare – lsare@tamu.edu



TEXAS A&M
UNIVERSITY.