

Chronicling Columbia through Digital Archives



Corrie Marsh, SFA

Columbia Space Shuttle 1981-2003



**Columbia landing at
KSC 1997**

**Named for 1st American
vessel to circumnavigate
the Earth**

**27 missions over two
decades**

**February 1, 2003
destruction 16 min before
touchdown (breach in
TPS on left wing)**

**More than 25,000
recovery searchers**



**Jeff Williams, then
student in SAF Forestry
Research Institute GIS
(now GIS Lab director)**

**All maps and posters
were produced and
donated by Jeff and
dedicated to the 7
lost astronauts**



<http://history.nasa.gov/columbia>

Williams' Chronicle of Search and Recovery Events

The screenshot displays the ScholarWorks interface of Stephen F. Austin State University. The header features the university's name and a statue of Stephen F. Austin. The main navigation bar includes links for Home, About, FAQ, and My Account. The left sidebar contains sections for Browse (Colleges and Departments, Research Projects and Centers, Discipline, Authors/Creators), Search (Enter search terms, in this series, Advanced Search, Notify me via email or RSS), Authors Corner (Scholars FAQ, Submit Research), and Links (Center for Digital Scholarship, R.W. Steen Library, Office of Research and Sponsored Programs, East Texas Research Center). The main content area shows a breadcrumb trail: Home > ATCOFA > SPATIALSCI DEPARTMENT > SPATIALSCI > 3. The title of the publication is "Search and Recovery of the Space Shuttle Columbia: A Geospatial 1st Responder Perspective" by Jeffrey M. Williams, Arthur Temple College of Forestry and Agriculture. The document type is Article, published in Spring 4-9-2003. The abstract describes a first-person account of the Texas geospatial volunteers' efforts to recover the remains of the Space Shuttle Columbia. The recommended citation is provided at the bottom. A sidebar on the right lists various digital repositories where the work is included, such as Archaeological, Anthropology Commons, Databases and Information Systems Commons, Geographic Information Sciences Commons, and Remote Sensing Commons. Social media sharing options are also available.

STEPHEN F. AUSTIN
STATE UNIVERSITY
NACOGDOCHES, TEXAS

ScholarWorks

Home About FAQ My Account

Home > ATCOFA > SPATIALSCI DEPARTMENT > SPATIALSCI > 3

< Previous Next >

FACULTY PUBLICATIONS

Search and Recovery of the Space Shuttle Columbia: A Geospatial 1st Responder Perspective

[Download](#)

Included in
[Archaeological](#)
[Anthropology Commons](#)
[Databases and Information Systems Commons](#)
[Geographic Information Sciences Commons](#)
[Remote Sensing Commons](#)

SHARE

[f](#) [t](#) [in](#) [S+1](#) [e](#) [+](#)

Document Type
Article

Publication Date
Spring 4-9-2003

Abstract
A first person account of the Texas geospatial volunteers and their efforts to recover the remains of the Space Shuttle Columbia and her crew lost over eastern Texas and western Louisiana on February 1st, 2003.

Recommended Citation
Williams, Jeffrey M., "Search and Recovery of the Space Shuttle Columbia: A Geospatial 1st Responder Perspective" (2003). Faculty Publications. Paper 3.
<http://scholarworks.sfasu.edu/spatialsci/3>

Browse
Colleges and Departments
Research Projects and Centers
Discipline
Authors/Creators

Search
Enter search terms:

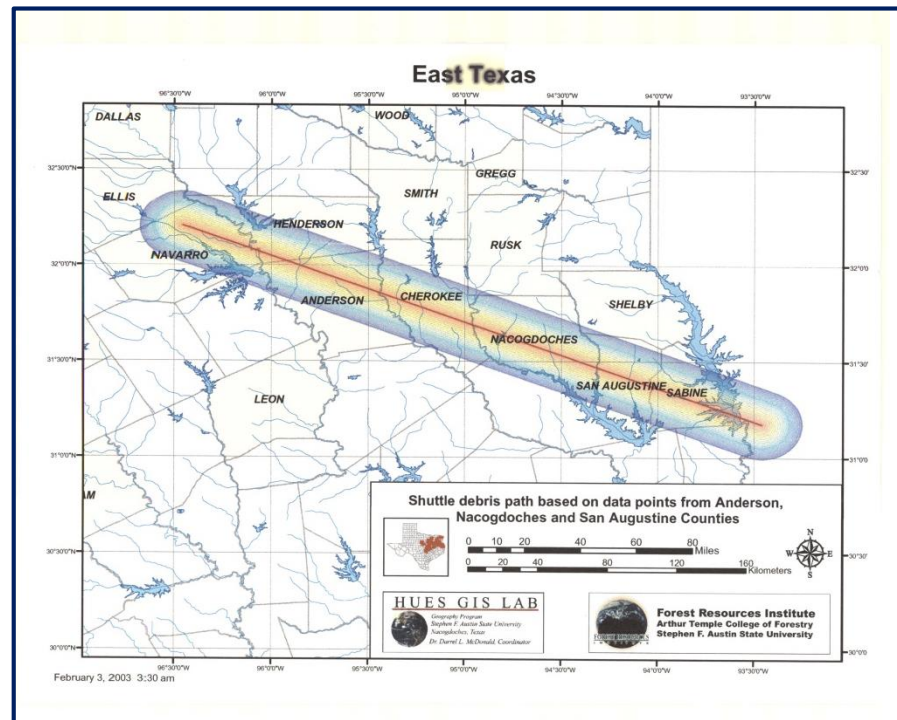
in this series
Advanced Search
Notify me via email or RSS

Authors Corner
Scholars FAQ
Submit Research

Links
Center for Digital Scholarship
R.W. Steen Library
Office of Research and Sponsored Programs
East Texas Research Center

<http://scholarworks.sfasu.edu/spatialsci/3>

Map produced and shown to the international press on Feb 3rd by FRI Director, Dr. Kroll and Nacogdoches County Sheriff Thomas Kerss



First of 1000's of search and recovery maps produced by the by the FRI GIS Lab for NASA, FBI, NTSB,FEMA and local law enforcement

20 kilometer buffer from centerline of mapped debris

Scale: 1:100,000
 Source: USGS National Wetlands Inventory (NWI) data, 1990
 Modified by: Texas A&M University, 2000
 Data: Texas A&M University, 2000
 Date: 2000
 Author: J. M. Williams
 Contact: jwilliams@tamu.edu
 Date: 2/20/00

Forest Resources Institute
 Arthur Temple College of Forestry
 Stephen F. Austin State University
 Nacogdoches, Texas

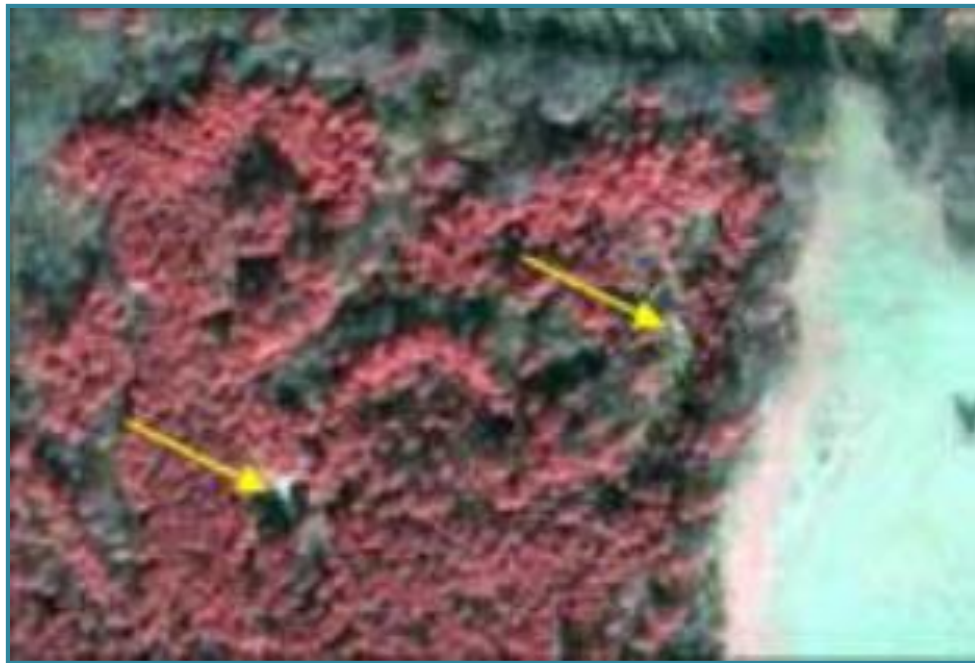
20 kilometers buffer from
centerline of mapped debris

J. M. Williams
Classical Mathematics Institute
 10000 University Avenue, Suite 100
 San Diego, CA 92121
 USA
 E-mail: jmw@ucsd.edu



Forest Resources Institute
Arthur Temple College of Forestry
Stephen F. Austin State University
Nacogdoches, Texas

Space Imaging's IKONOS satellite image showing debris in forest cover




East Texas Research Center's Digital Archives



Columbia: Recovery and Memorial

East Texas and the Space Shuttle Tragedy



[Digital Collections Home](#) | [Browse This Collection](#) | [Columbia Home](#) | [ETRC](#) | [Log in](#) | [Favorites](#) | [Help](#)

[Search](#) [Advanced Search](#)

[Home](#) >> [Space Shuttle Columbia Disaster and Recovery](#)

Space Shuttle Columbia Disaster and Recovery

About this collection

On February 1, 2003, the Space Shuttle *Columbia* disintegrated as it re-entered the Earth's atmosphere. As it traveled across the United States from west to east en route to the John F. Kennedy Space Center in Florida, the shuttle began breaking up due to damage sustained during takeoff. Seven astronauts, including an Israeli Air Force colonel, lost their lives on *Columbia*'s 28th and final mission. Much of the debris landed in East Texas and Louisiana, resulting in a long recovery effort by government officials, military units and volunteers.

Donation of Materials

This collection is the result of many contributors who donated their time and energy into the project. Contributors include those who participated in the oral histories conducted by the East Texas Research Center, the SFA Geography and Forestry Departments which created detailed maps of the debris field, volunteers who photographed the recovery efforts and the school children who through art interpreted the tragedy that landed in their own backyards. Material collected in 2003 by Connie Hodges, Cynthia Keedy, Shanna Guillote, and Jerry McShane and 2013 by Jennifer Brancato.

Project Information

The Shuttle Columbia exhibit was a collaborative project between the East Texas Research Center and the Center for Digital Scholarship. Mark Musquiz created the online exhibit during the Fall 2013 semester.

Exhibit Creator Mark Musquiz, Graduate Student,

Website Designer Dillon Wackerman, Digital Archivist

Editor Linda Reynolds, Director, East Texas Research Center

The Collection

Maps

The items in this collection detail the *Columbia* tragedy and its impact on the East Texas region. It includes oral histories, written testimonies of witnesses and volunteers, mappings of the debris field, photographs and video of the recovery efforts.

[Browse Maps](#)

Oral Histories


Included in the *Columbia* are the accounts of persons who were affected by the disaster or who helped in the recovery efforts. Three of these oral histories are presented in the collections.

[Browse Oral Histories](#)


Childrens' Art

Recent Additions


[Receive updates for this collection.](#)



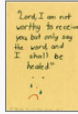
Clarence Riddle
Debris Photos




Art, Lufkin Middle
School




Art, Pinewoods
Community
Academy,



Art, St Patricks
Church

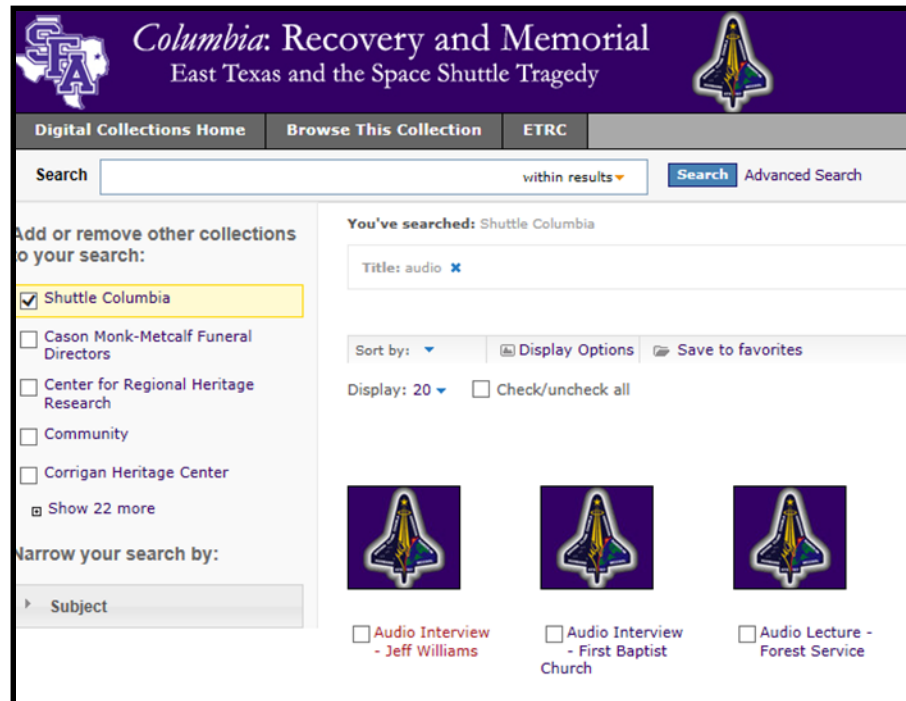


Art, Lufkin Middle
School 6th grade




Art, St Cyprians
Episcopal School


Created in 2013 by intern Mark Musquiz



Jeff was one of several people to provide oral histories of their experience



Columbia: Recovery and Memorial
East Texas and the Space Shuttle Tragedy



Digital Collections Home
Browse This Collection
Columbia Home
ETRC
Log in

Search
within results
Search
Advanced Search


Add or remove other collections to your search:


- ☒ Space Shuttle Columbia
- ☐ Cason Monk-Metcalf Funeral Directors
- ☐ Center for Regional Heritage Research
- ☐ Community
- ☐ Corrigan Heritage Center
- Show 22 more


Narrow your search by:


- Subject
- Format
- Type


You've searched: Space Shuttle Columbia
Subject: art
Sort by:
Display Options
Save to favorites
Display: 20
Check/uncheck all



☐ Art, Brookhollow Elementary School, 3rd Grade



☐ Art, Lufkin Middle School 5th grade



☐ Art, St Cyprians Episcopal School



☐ Art, Lufkin Middle School 6th grade


☐ Art, St Patricks Church


☐ Art, Pineywoods Community Academy,

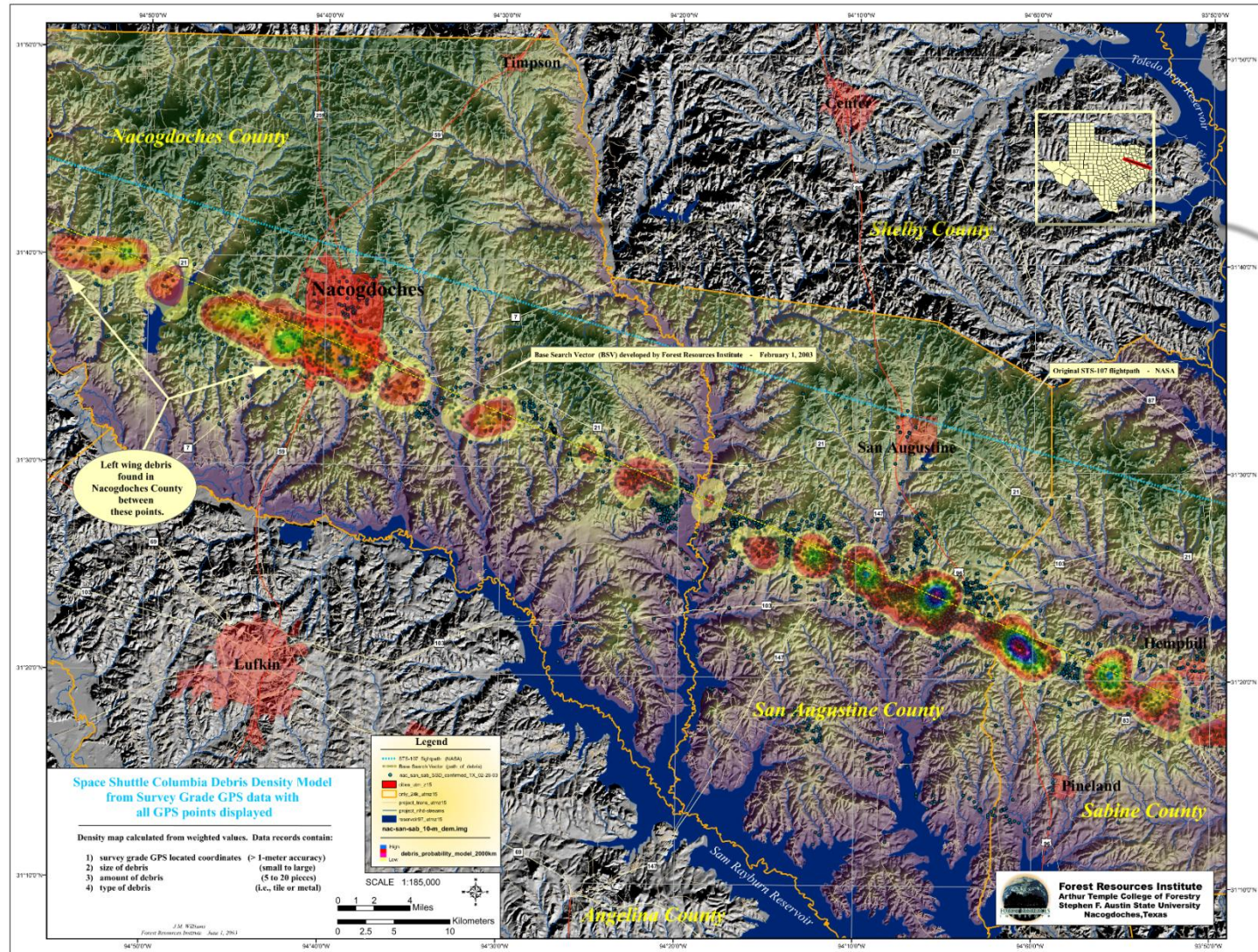

☐ Art, Lufkin Middle School

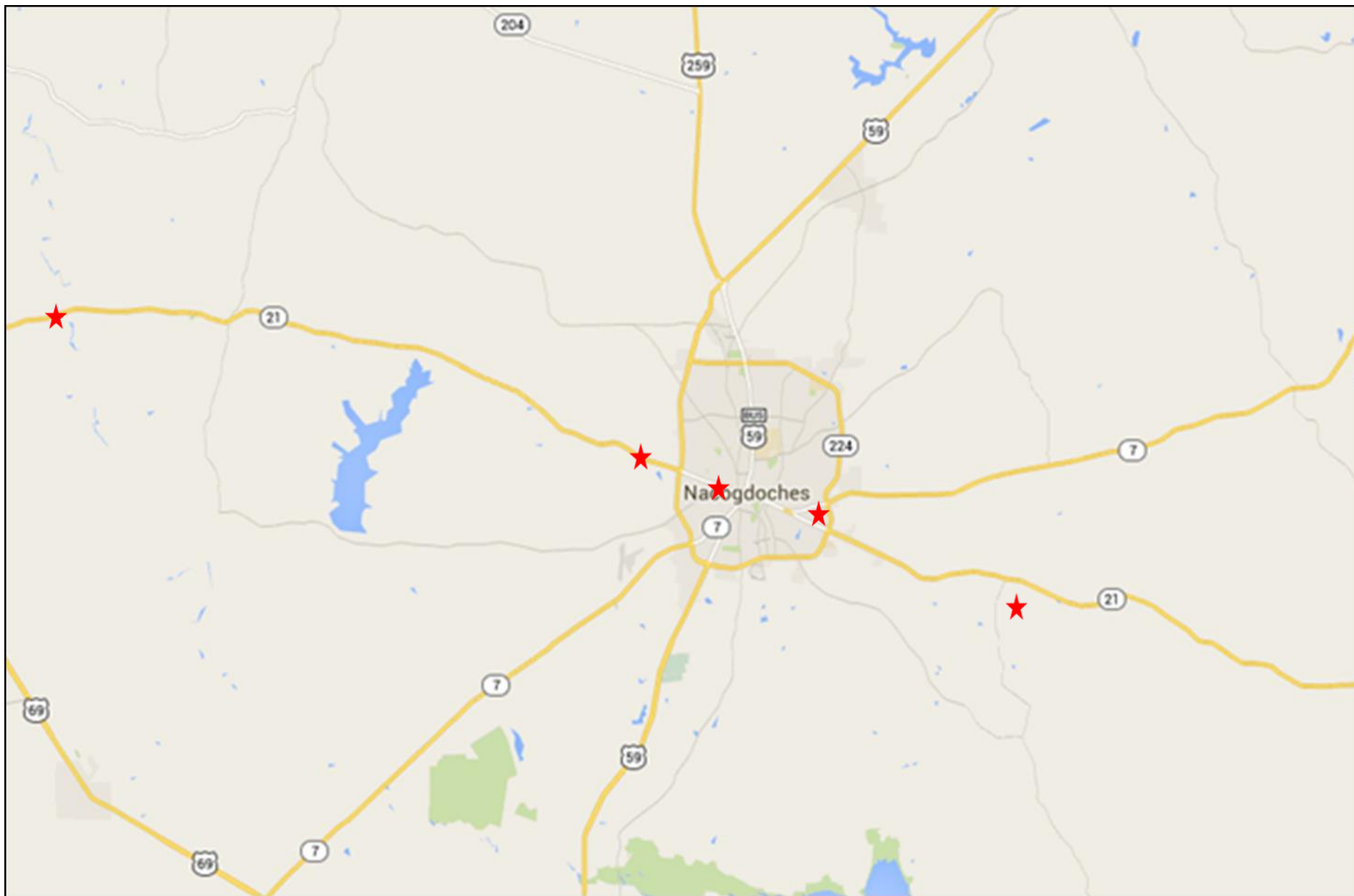

☐ Art, Ceramic


☐ Art, Hudson Middle School

Local School Children's Art Depicting Their Understanding of the Tragedy

Debris Density Topographical Mapping

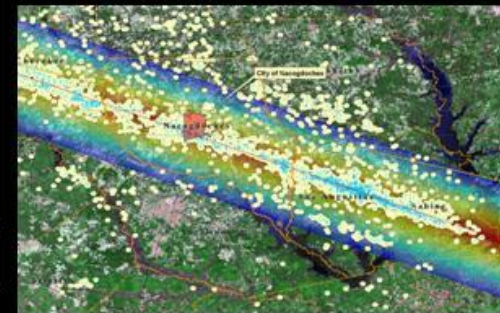
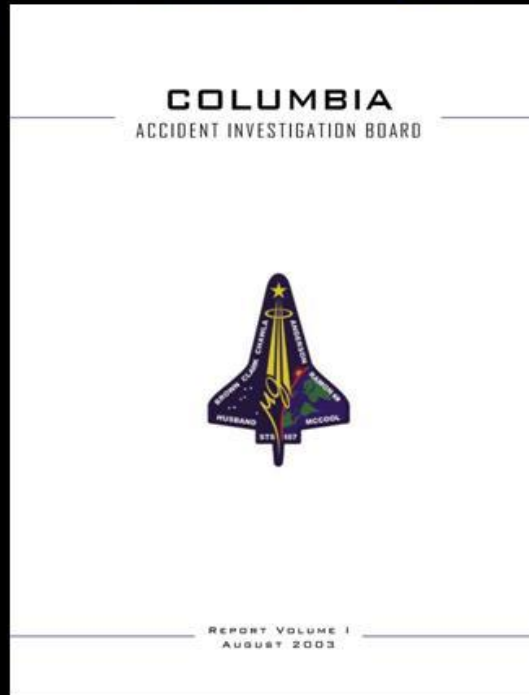
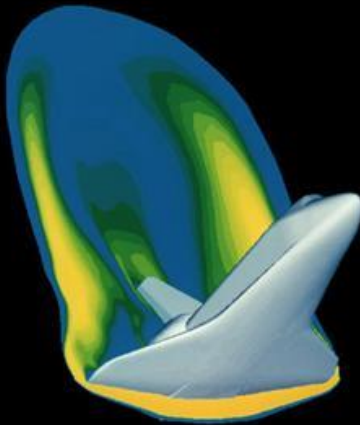
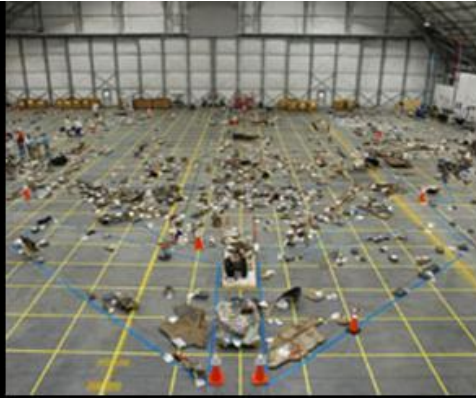






**Aluminum tank found 8 years later in 2011
during a drought at Lake Nacogdoches**





Space Craft Reconstruction and Accident Investigation

In Remembrance of Space Shuttle Columbia STS-107

The Columbia

In an age when space flight has come to seem almost routine, it is easy to overlook the dangers of travel by rocket, and the difficulties of navigating the fierce outer atmosphere of the Earth. These astronauts knew the dangers, and they faced them willingly, knowing they had a high and noble purpose in life.

Because of their courage and daring and idealism, we will miss them all the more.

George W. Bush
February 1, 2003



Thank you!

cmars12@gmail.com