

2014 Texas Conference on Digital Libraries, April 28 2014

Place-Based Online Data Management Systems for Documenting the Built Environment

Josh Conrad, M.Arch., M.S.H.P.

University of Texas at Austin

Hardy Heck Moore, Inc.



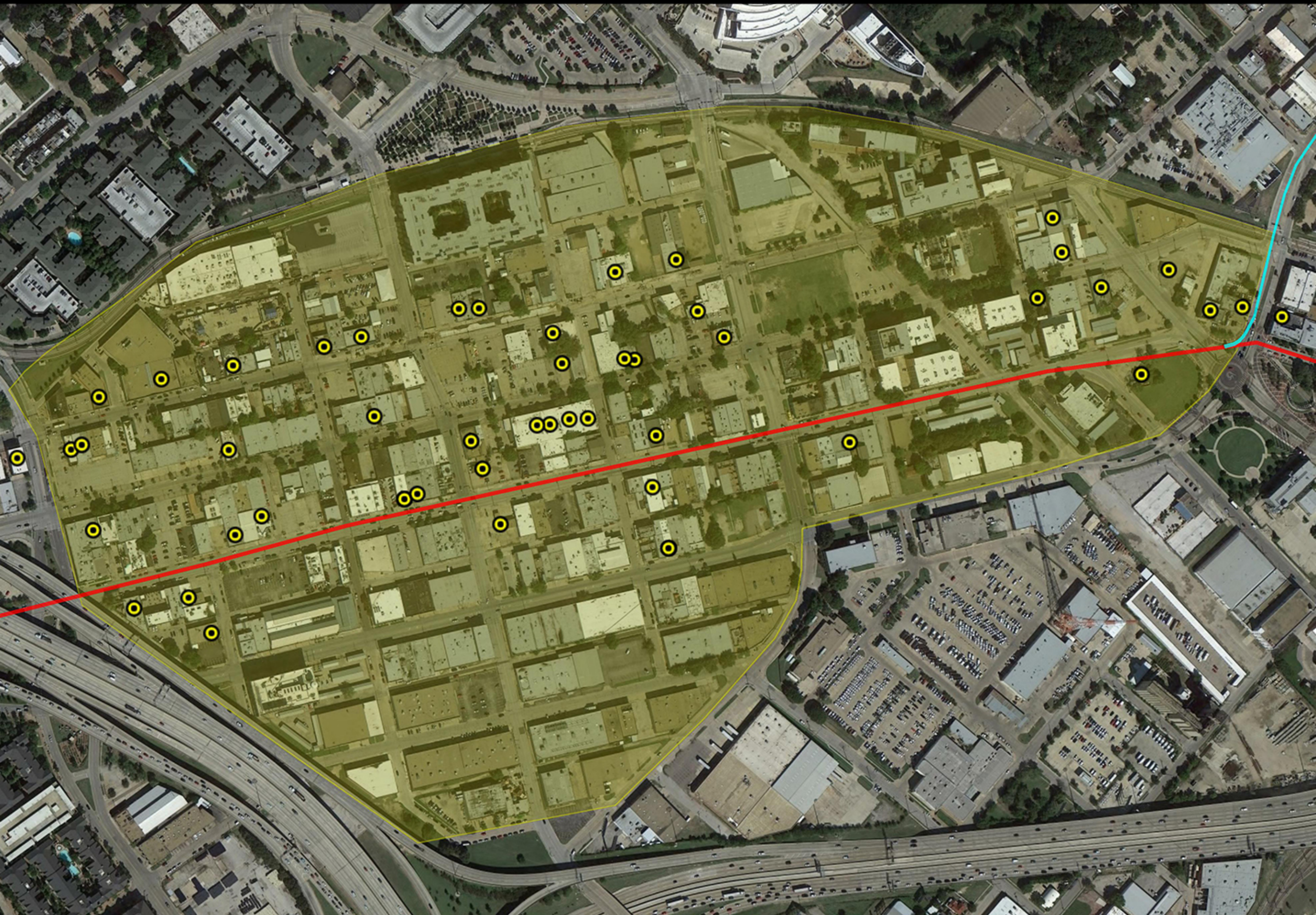


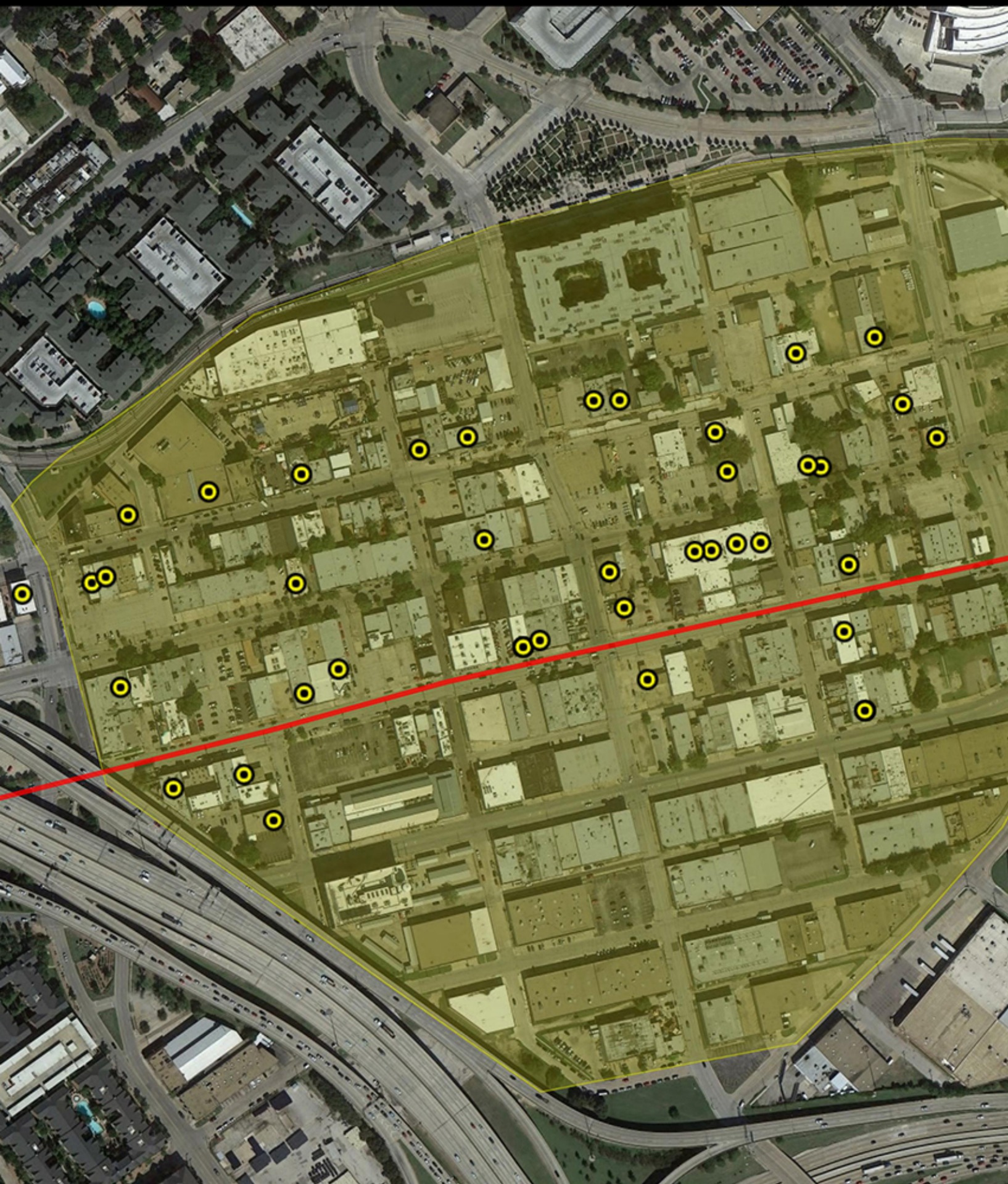










ca. 1920 Gulf gas station, Mount Vernon, TX (2013, HHM Inc.)





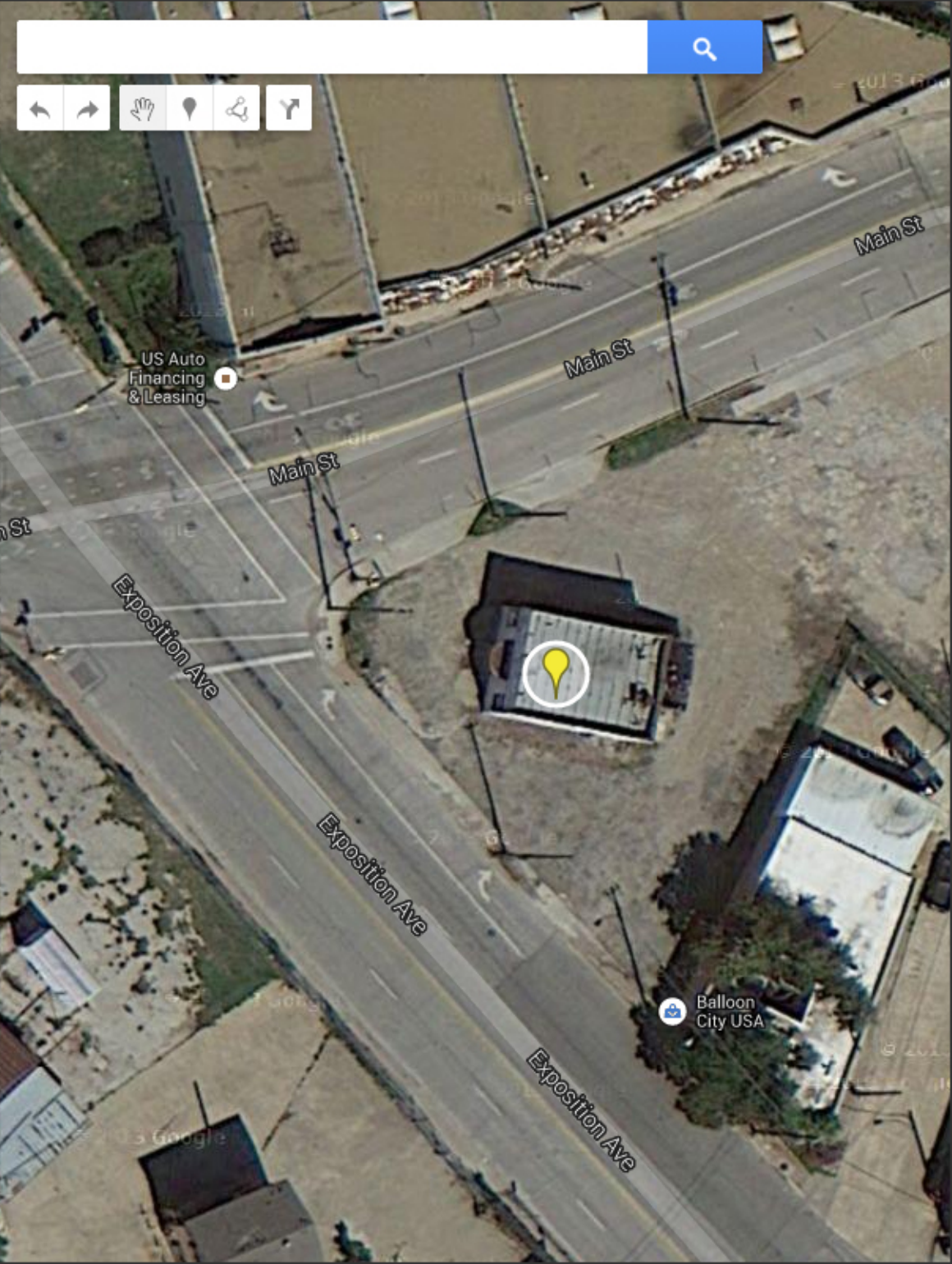
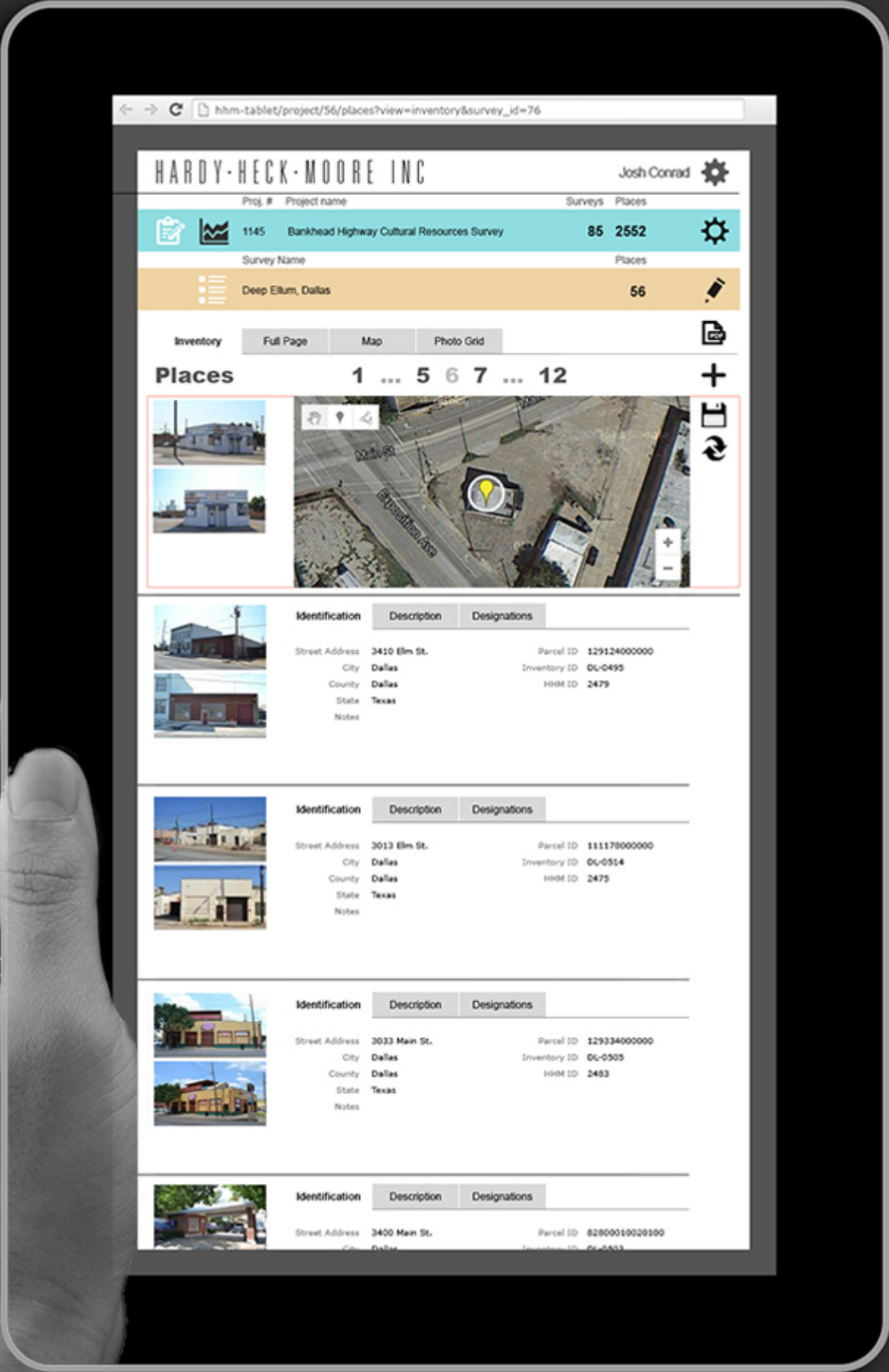
Well-Known Text ISO/IEC 13249-3:2011

Geometry primitives (2D)		
Type	Examples	
Point		POINT (30 10)
LineString		LINSTRING (30 10, 10 30, 40 40)
Polygon		POLYGON ((30 10, 40 40, 20 40, 10 20, 30 10))
		POLYGON ((35 10, 45 45, 15 40, 10 20, 35 10), (20 30, 35 35, 30 20, 20 30))

```

POLYGON((-96.7865399965075 32.78406219094808,-
-96.78605765531701 32.78255032880674,-96.783686
66685594 32.78113144656415,-96.78248110404346
32.78042197890704,-96.7803814450315 32.7807598
3928237,-96.77943638333741 32.78153552506623,-
-96.77868025923604 32.78225660029504,-96.778454
544241 32.78259816330384,-96.77839811116184 32
.7828638251738,-96.77838681714037 32.783233855
37864,-96.77593755095214 32.78371916918118,-96
.77458476592928 32.78407064260458,-96.77406822
476941 32.78446350223938,-96.77376074634465 32
.78483569334973,-96.77357623669687 32.78532162
093888,-96.77337941893143 32.78587992333772,-9
6.77518723181176 32.78635560008599,-96.7768105
8165352 32.78677955744869,-96.77833557115908 3
2.78700705650602,-96.77920996506501 32.7870135
3041443,-96.78094892213248 32.7868274536877,-9
6.78289333840492 32.78640213948506,-96.7838304
5643105 32.78609307225304,-96.78484351245689 3
2.78579789781937,-96.78561581905508 32.7853003
4731376,-96.78643826993753 32.78481122288369,-
-96.7866689541741 32.78464256056274,-96.7868394
5631092 32.78447390084394,-96.7865399965075 32
.78406219094808))

```



1925 concrete bridge, Commerce St., Ranger, TX (2013, HHM Inc.)



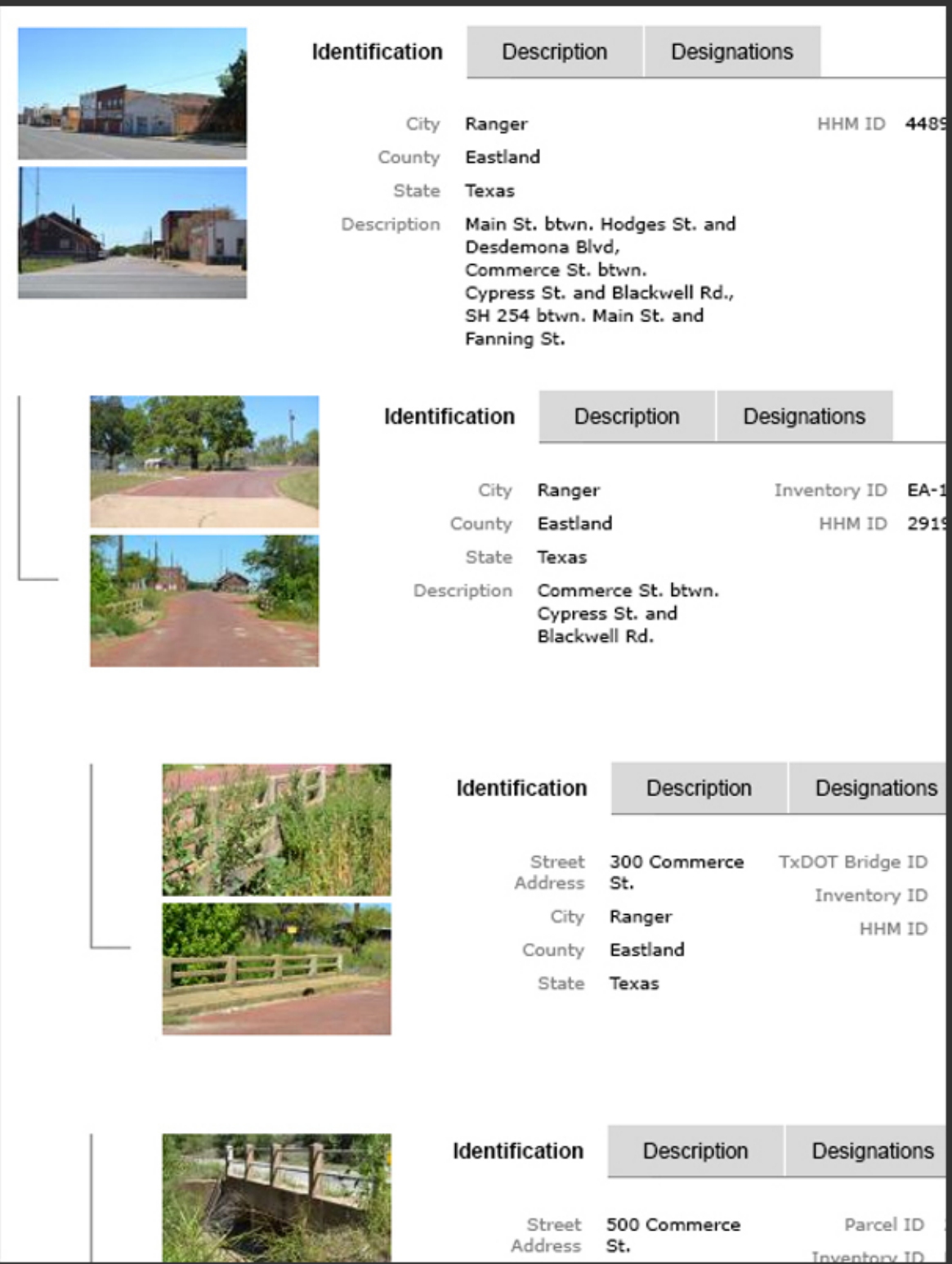
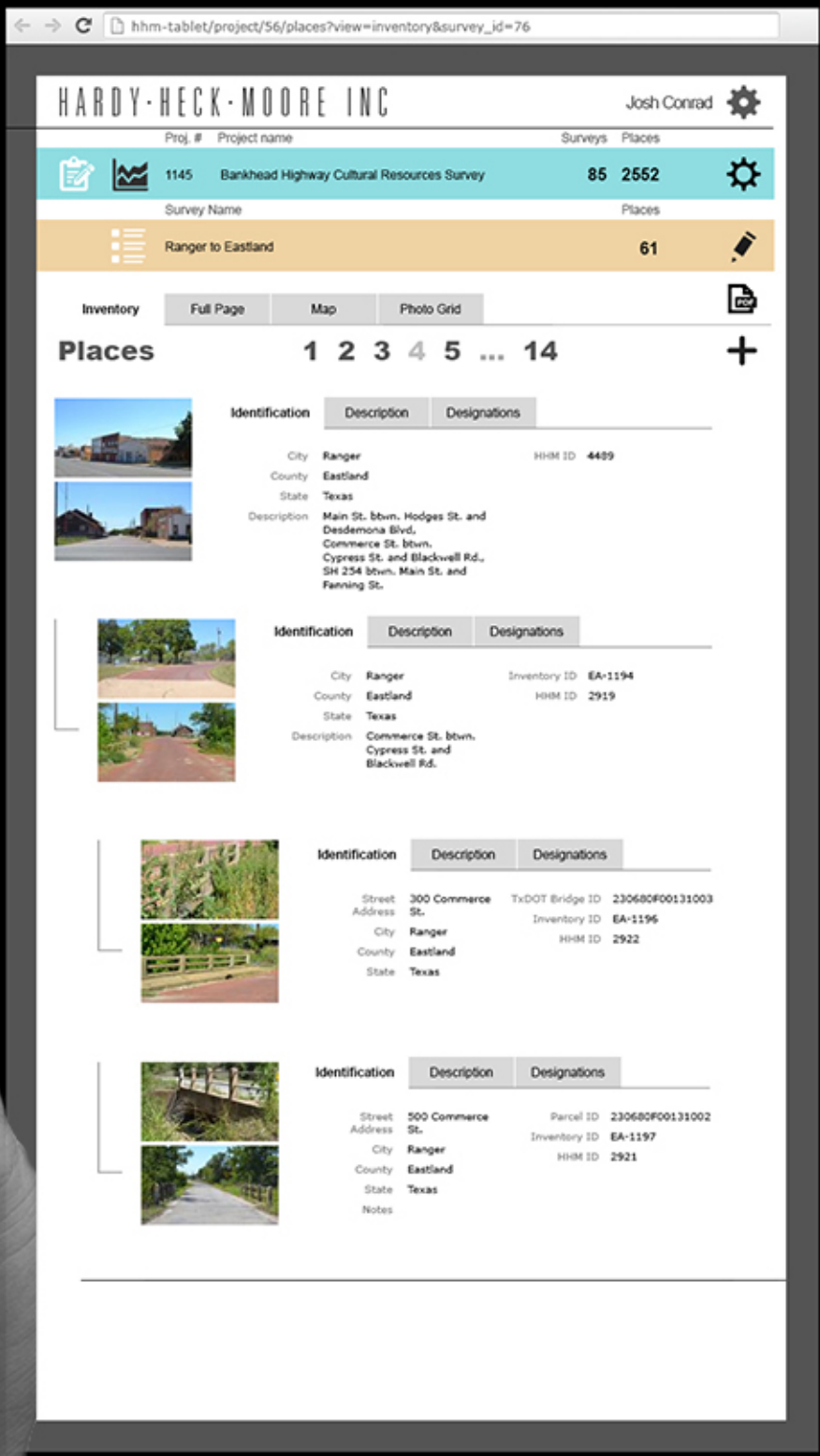


ca. 1925 road segment, Commerce St., Ranger, TX (2013, HHM Inc.)





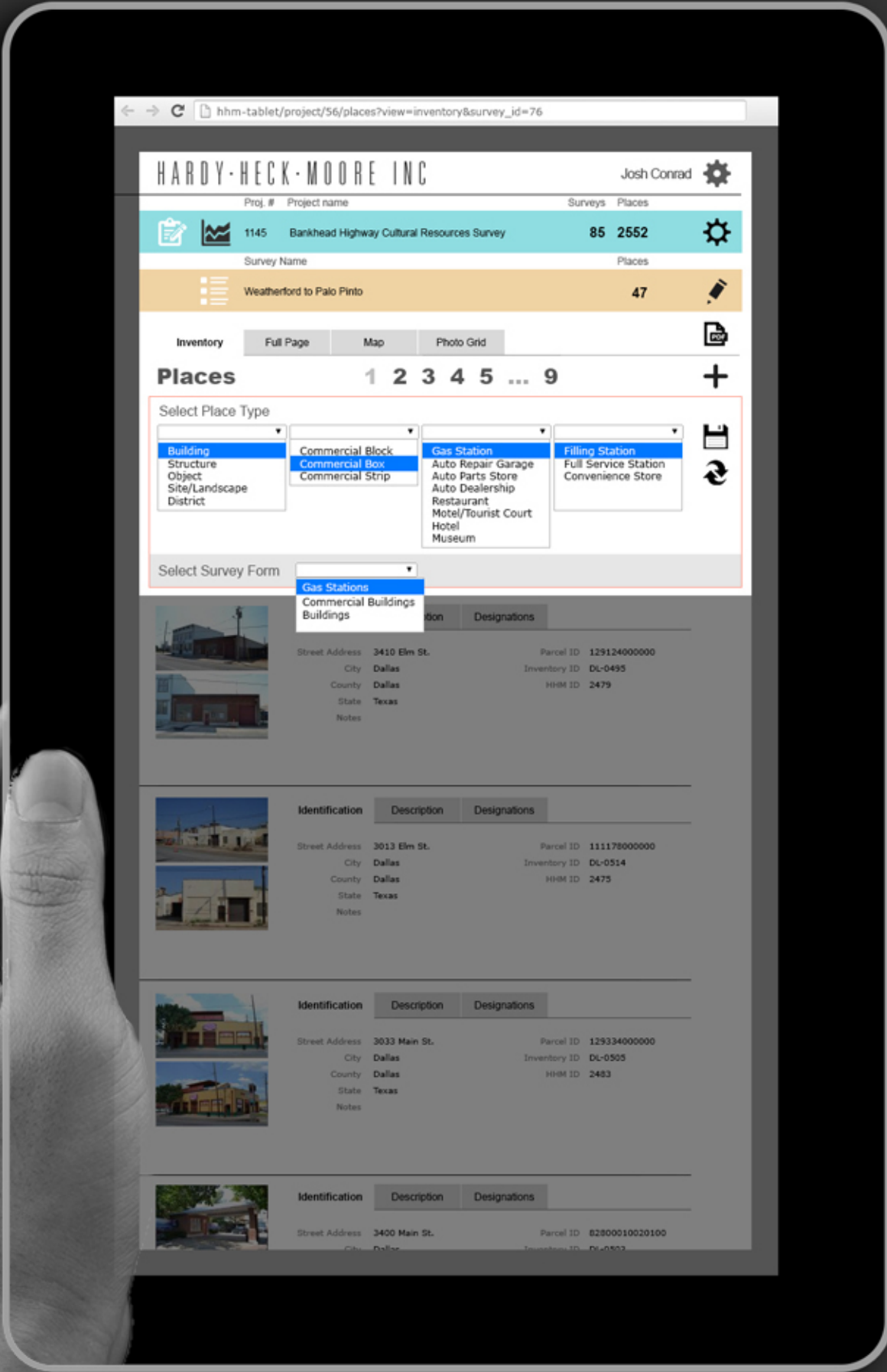








ca. 1925 gas station and diner, Vicinity of Stawn, TX (2013, HHM Inc.)



Places

12345...9

Select Place Type

Building

Structure

Object

Site/Landscape

District

Commercial Block

Commercial Box

Commercial Strip

Gas Station

Auto Repair Garage

Auto Parts Store

Auto Dealership

Restaurant

Motel/Tourist Court

Hotel

Museum

Filling Station

Full Service Station

Convenience Store

Select Survey Form

Gas Stations

Commercial Buildings

Buildings

Identification

Description

Designations

Places

12345...9

Select Place Type

Building

Structure

Object

Site/Landscape

District

Transportation

Bridge

Culvert

Roadway Segment

Grade Separation

Curb

Flat Slab

Slab and Girder

Girder - Tee Beam

Plate Girder

I-Beam

Select Survey Form

Bridges

Structures

Identification

Description

Designations

Attributes

for:

Gas Stations ▾

1

2

3

Stories



Exterior Materials

Roofs : Roof Type

Roofs : Roof Materials

Signage

Exterior Materials

Metal ▾

▾

Corrugated Metal

Metal Panel

Porcelain Enamel Panels

Steel

Roofs : Roof Type

Roofs : Roof Materials

Signage



Attributes

for:

Gas Stations

1

2

3

Stories



Exterior Materials

Metal - Porcelain Enamel Panels

Roofs : Roof Type

Roofs : Roof Materials

Signage



unknown building on US 67, Vicinity of Mount Vernon, TX (2013, HHM Inc.)



austinhistoricalsurvey.org

E-mail

Password

Log in

Forgot password

Join the Wiki

austin historical survey★wiki

Map

Find Places

Guide

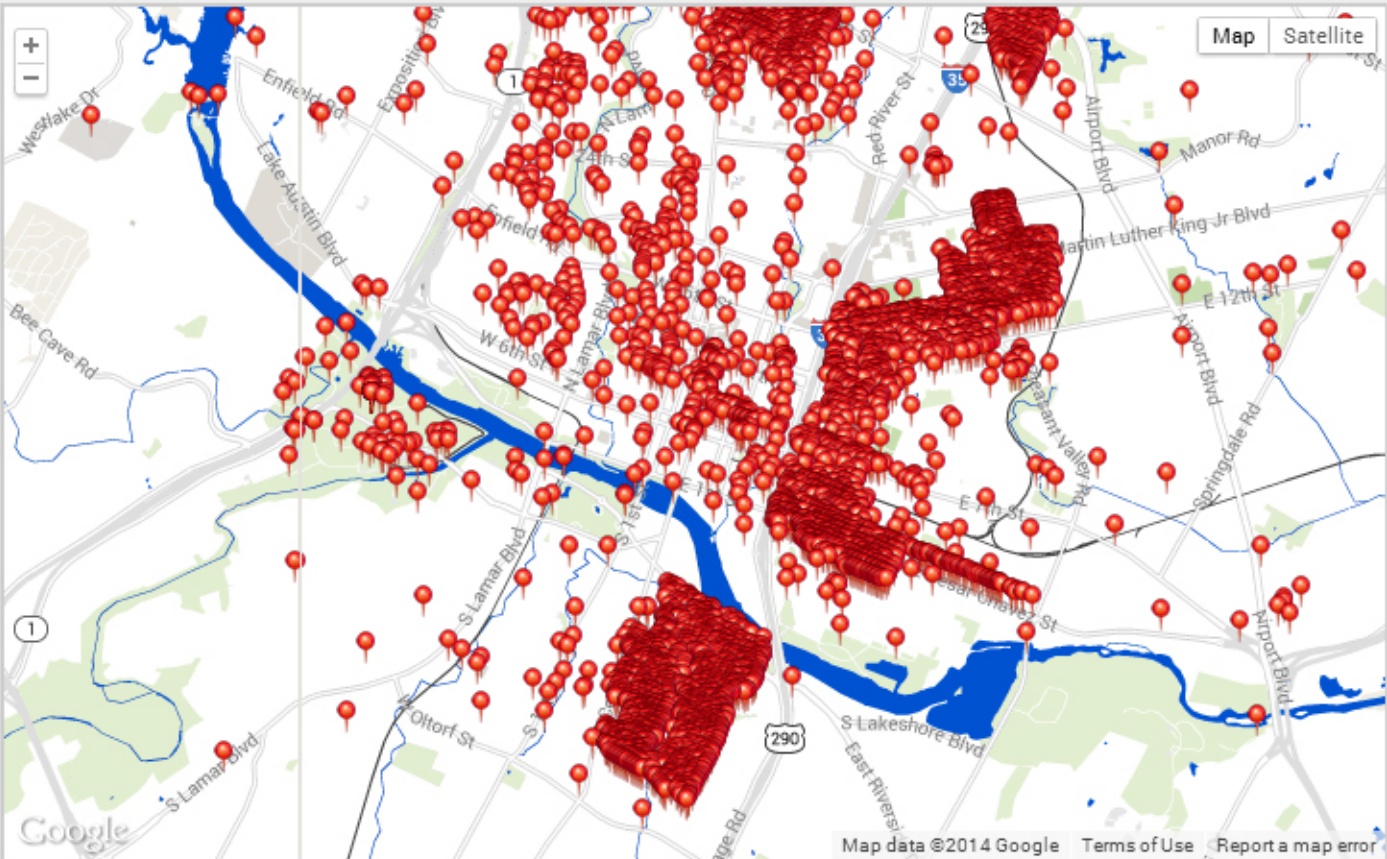
Contact

Find an Address

Search

Search any or all parts of an address. Enter numbered streets like "16th St". Or use the [Advanced Search](#)

[City of Austin Landmarks](#) | [Demolished Places](#)



The Austin Historical Survey Wiki is a new interactive tool for the City of Austin. The Wiki allows you to find and contribute information about historic buildings, sites, and landscapes of the past and present that tell the history of Austin.

[Find Places](#) to see what has been added to the Wiki.

[Create a login](#) to add or edit place records.

[Learn more](#) about the project on the Wiki User Guide.

Wiki Stats:

Places:	5322
Images:	4151
Documents:	1250
Users:	283
Survey Efforts:	22


The information on the Austin Historical Survey Wiki is continuously being produced by numerous citizens and professionals. It is a working model for sharing information. If you see something that appears to be incorrect or incomplete, you are invited to log onto the Wiki and submit an edit. No warranty is made by the City of Austin regarding its accuracy and completeness.

This project was funded in part through the City of Austin, a Certified Local Government Grant administered by the Texas Historical Commission, and a Preserve America grant by the Department of the Interior, National Park Service. Any opinions, findings, and conclusions or recommendations expressed in this material are those of the author(s) and do not necessarily reflect the views of the Department of the Interior.

The Austin Historical Survey Wiki receives Federal funds from the National Park Service. Regulations of the U.S. Department of the Interior strictly prohibit unlawful discrimination in departmental Federally Assisted Programs on the basis of race, color, national origin, age or handicap. Any person who believes he or she has been discriminated against in any program, activity, or facility operated by a recipient of Federal assistance should write to: Director, Equal Opportunity Program, U.S. Department of the Interior, National Park Service, P.O. Box 37 127, Washington, D.C. 20013-7 127.

Data may be exported to a Comma-Separated Values (CSV) spreadsheet via the following link (Note: download may take several minutes to process): [Full CSV Export](#)

Review Level	Preservation Office	Professional	Unreviewed
Potential Designation(s)			Local Histori
Place Type			Site
Status	Existing		Existing
Moved		Moved to thi	Has not Mov
Current Name(s)	<div>North Austin Sub-Station</div> <div>Updated 05/08/2011 - 12:15 PM</div> <div>By City of Austin</div>	North Austin	Sparky Park
Historic Name(s)	North Austin Sub-Station		North Austin
Overview			The site of a
History			Until recently
Significance			The Grooms
Integrity			
Characater-Defining Features			
Construction Year(s)	Actual 1913-1913		Estimated :
Stylistic Influence(s)		Moderne	
Current Use(s)	residence		CULTURE-Of
Historic Use(s)		electric sub-:	Government
Physical Description	Wall Facade: Brick	Roof Descrip	Roof Materia
Associated Person(s)	Stories: 1.0	Door Descrip	Roof Descrip
References			Current Owr
			TCAD ID#: 2
			Austin Parks

Review Level	Preservation Office	Professional	Unreviewed
Potential Designation(s)			Local Historic District : Contributing to a District
Place Type			Site
Status	Existing		Existing
Moved		Moved to th	Has not Moved
Current Name(s)	North Austin	North Austin	Sparky Park  Updated 02/08/2012 - 08:18 PM By Jenni Minner
Historic Name(s)	North Austin		North Austin Sub-Station
Overview			The site of a former electric substation, Sparky Park was created through the efforts and vision of neighbo
History			Until recently, it contained an Austin Energy electrical substation serving the neighborhoods around 38th St
Significance			The Grooms Street site is a .45 acre tract of land. Until recently, it contained an Austin Energy electrical sul
Integrity			
Characater-Defining Features			
Construction Year(s)	Actual 191		Estimated 1913-
Stylistic Influence(s)		Moderne	
Current Use(s)	residence		CULTURE-Outdoor Recreation
Historic Use(s)		electric sub-	Government - Public Works Electrical Sub-Station
Physical Description	Wall Facade: Stories: 1.0	Roof Descrip Door Descrip	Roof Materials: Built-up Roof Description: Flat
Associated Person(s)			Current Owner(s): CITY OF AUSTIN
References			TCAD ID#: 211505 Austin Parks and Recreation Park Profile for Sparky Park:

Review Level	Preservation Office	Professional	Unreviewed
Potential Designation(s)			Local Historic District : Contributing to a District
Place Type			Site
Status	Existing		Existing
Moved		Moved to th	Has not Moved
Current Name(s)	North Austin	North Austin	<div>Sparky Park</div> <div><input type="checkbox"/> Replace existing data from previous authors</div> <div>Please edit the sources and notes as needed at bottom of page</div>
Historic Name(s)	North Austin		North Austin Sub-Station
Overview			The site of a former electric substation, Sparky Park was created through the efforts and vision of neighbo
History			Until recently, it contained an Austin Energy electrical substation serving the neighborhoods around 38th St
Significance			The Grooms Street site is a .45 acre tract of land. Until recently, it contained an Austin Energy electrical sul
Integrity			
Characater-Defining Features			
Construction Year(s)	Actual 1911		Estimated 1913-
Stylistic Influence(s)		Moderne	
Current Use(s)	residence		CULTURE-Outdoor Recreation
Historic Use(s)		electric sub-	Government - Public Works

Review Level	Preservation Office	Professional	Unreviewed
Potential Designation(s)			Local Historic District : Contributing to a District
Place Type			Site
Status	Existing		Existing
Moved		Moved to th	Has not Moved
Current Name(s)	North Austin	North Austin	Sparky Park
Historic Name(s)	North Austin		North Austin Sub-Station
Overview			<p>The site of a former electric substation, Sparky Park was created through the efforts and vision of neighbors. It is a .45 acre tract of land. Lovely old trees and a unique art wall make this pocket park something special.</p> <p>Until recently, it contained an Austin Energy electrical substation serving the neighborhoods around 38th Street. Austin Energy, the Austin Parks and Recreation Department, and Austin Energy worked for about three years to convert the tract to parkland. A one-story, 828 square feet brick building occupies the front of the lot. Historically the building housed the electrical switching equipment. In the 1960s, additional equipment and transmission towers were added in the back.</p> <p>Updated 04/06/2012 - 02:08 PM By Jenni Minner, Seher Dholakia</p> <p>1 revision</p>
History			The Grooms Street site is a .45 acre tract of land. Until recently, it contained an Austin Energy electrical sul
Significance			
Integrity			
Characater-Defining Features			
Construction Year(s)	Actual 191.		Estimated 1913-
Stylistic Influence(s)		Moderne	
Current Use(s)	residence		CULTURE-Outdoor Recreation



Review Level	Preservation Office	Professional	Unreviewed
Potential Designation(s)			Local Historic District : Contributing to a District
Place Type			Site
Status	Existing		Existing
Moved		Moved to th	Has not Moved
Current Name(s)	North Austin	North Austin	Sparky Park
Historic Name(s)	North Austin		North Austin Sub-Station
Overview			<p>The site of a former electric substation, Sparky Park was created through the efforts and vision of neighbors. It is a .45 acre tract of land. Lovely old trees and a unique art wall make this pocket park something special.</p> <p>Until recently, it contained an Austin Energy electrical substation serving the neighborhoods around 38th Street. Austin Energy, the Austin Parks and Recreation Department, and Austin Energy worked for about three years to convert the tract to parkland. A one-story, 828 square feet brick building occupies the front of the lot. Historically the building housed the electrical switching equipment. In the 1960s, additional equipment and transmission towers were added in the back.</p> <p>Updated 04/06/2012 - 02:08 PM By Jenni Minner, Seher Dholakia</p> <p>1 revision</p> <p>The site of a former electric substation, Sparky Park was created through the efforts and vision of neighbors. Lovely old trees and a unique art wall make this pocket park something special.</p> <p>Notes Sources: Austin Parks and Recreation Department, Park Profile: http://austinparks.org/apfweb/park.php?parkId=692;</p> <p>Updated 04/06/2012 - 01:46 PM By Jenni Minner</p>
History			The Grooms Street site is a .45 acre tract of land. Until recently, it contained an Austin Energy electrical sul
Significance			



Josh Conrad
jconrad@hhminc.com

